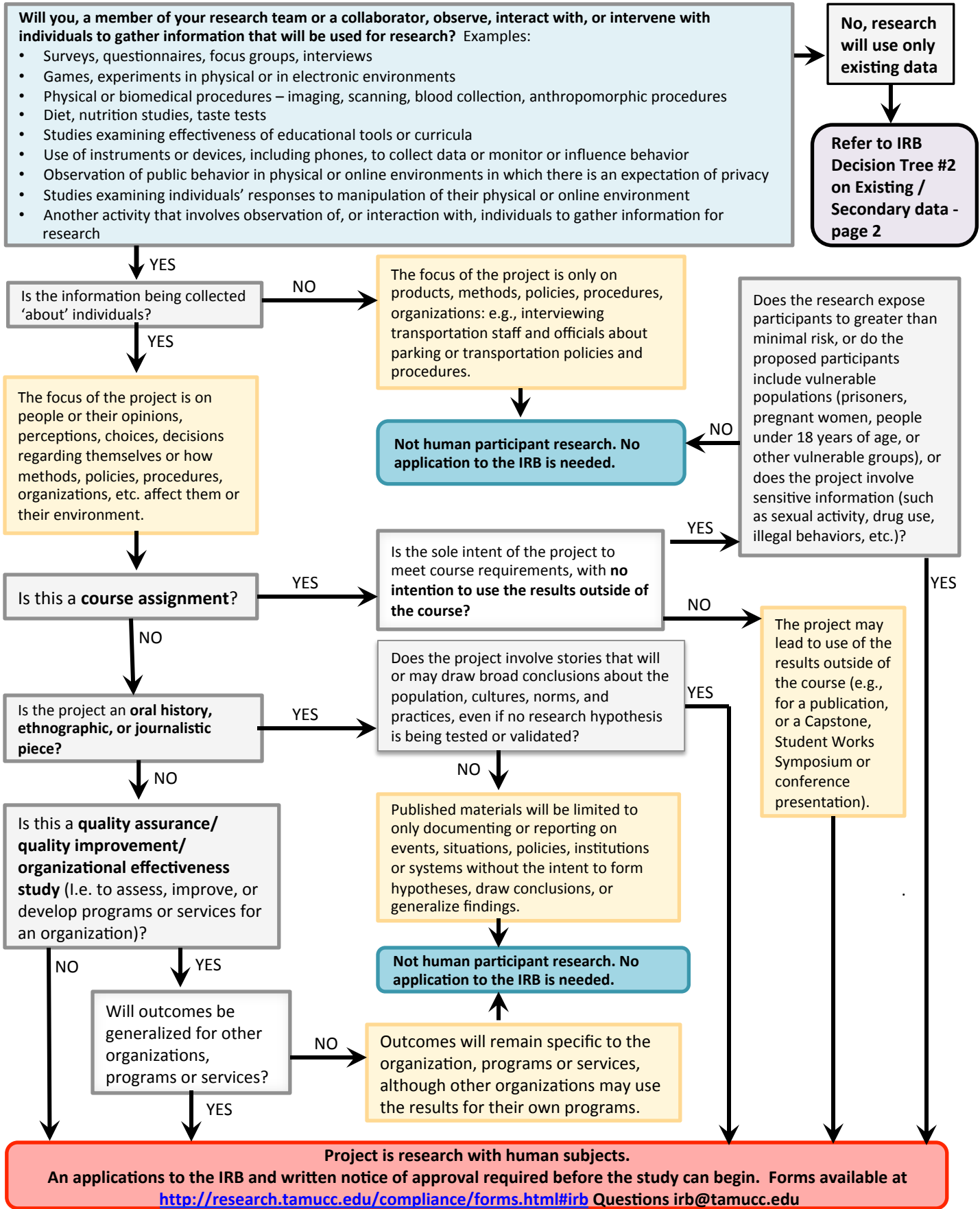
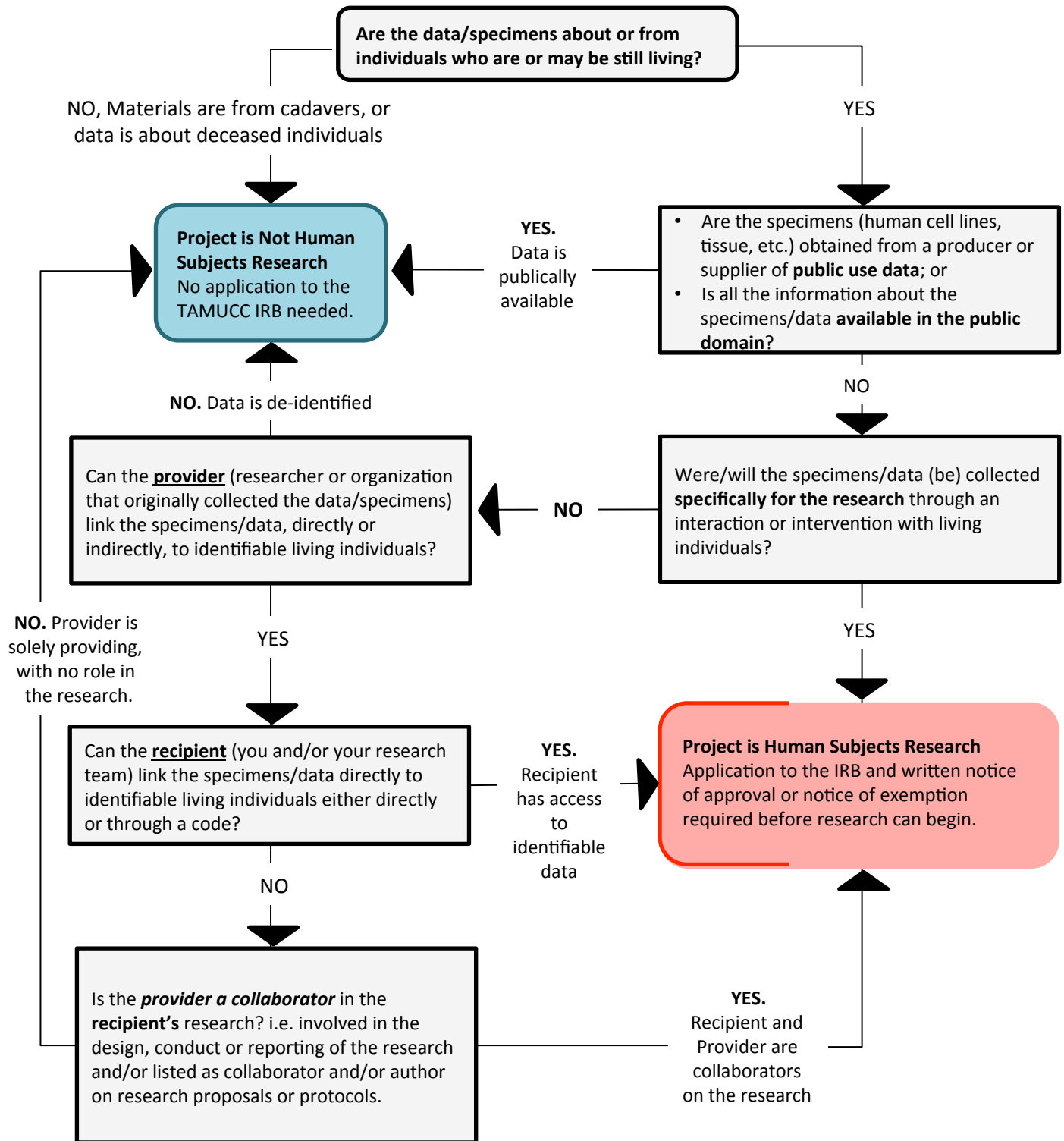


## Does Your Project Require an Application to the TAMUCC Institutional Review Board (IRB)?



**Does Your Research Involving Secondary or Existing Data, Documents or Biological Specimens  
Require Review by the TAMUCC IRB  
DECISION TREE #2**



All Forms at <http://research.tamucc.edu/compliance/forms.html#irb>  
 Questions? Contact [tamucc@tamucc.edu](mailto:tamucc@tamucc.edu)  
 Decision trees adapted with permission from the Cornell University IRB Decision Tree-  
<https://www.irb.cornell.edu>